

A NEW SEASON!

As we come through the summer and look toward the fall months, we are looking at a new season for St. Luke's. Our Kickoff Sunday will be September 11.

Some of our new season activities we've done before, like the beginning of fall Sunday School, Bible Classes, and a host of other fall programs.

But other things will be new, like the Spiritual Gifts Inventory to be taken and evaluated during the services on September 24 and 25. After the services, you can learn of opportunities here you may not have considered before. We also have a new Encouragement Team willing to contact members as a follow up to maximize the blessings to our members.

In late October and November we will for the first time in a long while offer a fresh look at stewardship and the satisfaction that comes from a life lived closer to God.

And, through these fall months we will be going through the

prayerful process of selecting pastors to be interviewed to serve as our next lead pastor. Our Spiritual Gifts and Stewardship efforts will be a big part of our preparation for extending that call!

May our gracious God guide us through this new season of planning and preparation at St. Luke's! Please continue to pray for us.

Pastor David Reinke



David Reinke
Interim Lead Pastor
dreinke@stlukes-church.com

In This Issue

Note from Pastor Jake	2
Outreach Opportunities from Pastor Chris	3
Missions	4-5
Godspell	5
On Fire!	6-7
VBS Fact Sheet	8
Adult Sunday School Opportunities	9
Women's Events	10
Gifts Fair	11
St. Luke's Foundation	12-13
Membership Updates	13
Finances	14
Snap Shots	15
Staff	16



A NOTE FROM PASTOR JAKE

The “Back to School” sales have begun, which means it’s almost time for school! We might not have any sales going on at St. Luke’s, we sure do have a whole bunch of exciting things happening as school begins. Let’s take a look!

Sunday, September 11 is the big day for all of our High School and Middle School events. Sunday morning Bible Studies will be back during the 11:00am hour! We have something for everyone. Grades 7 and 8 will have a Middle School Bible Study in upper Malkow Hall. Our High School guys and girls groups (for grades 10-12) will also start up in Malkow Hall in the Alieis and Charis rooms. Confirmation (grade 9) also begins that day! All of the information for these groups will be sent to you in the Red Envelopes. If you haven’t received one in the mail, they are available on the On-Fire Family Ministry wall in the St. Luke’s lobby. You can’t miss them!

Every week we provide an opportunity to get away from the craziness of busy schedules to listen to God’s Word and enjoy each other’s company. Our weekly hangout, “Light it Up!,” is always a good time had by all. All youth grades 9-12 are invited to Light it Up! HS every Tuesday, 7-8:30pm in Malkow Hall. Likewise, all youth grades 7-8 are invited to Light it Up! MS every Wednesday, 7-8:30pm in Malkow Hall. Add our Instagram account (@ignite_stlukes) and see what we do!

Ignite has many grade-specific events including retreats and hangout nights. Information for these events can be found in the red envelopes. Everything you need to know is inside that envelope including information on events, mission trips, retreats, and specialized Bible verses for the yearly focus.

I’ve said it before and I’ll say it again: we can’t promise that you’ll have the most fun you’ve ever had. We can’t promise that you’ll love everything we do or that we’ll be the coolest youth ministry in town (although we do some seriously cool stuff). But what we can promise is that you will be loved and cared for...and more importantly, we can promise we will tell you about Jesus for you. We’ll see you soon!

Only Because of Jesus,
Pastor Jake



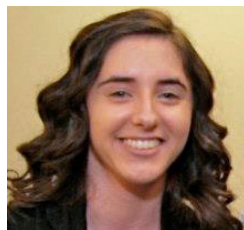
Jake Allstaedt
Associate Pastor
jallstaedt@stlukes-church.com

College & Seminary Scholarship Fund

Please join us in congratulating this year’s scholarship recipients: Rebecca Badger, Breann Evenson, Madison Hunt, Melika Mindemann and Tessa Pariseau. Each of these students will receive a \$1,000 scholarship toward their upcoming year at college.



Rebecca Badger
Arizona State University



Breann Evenson
University of Washington



Madison Hunt
Washington State University



Melika Mindemann
Ashford University



Tessa Pariseau
Concordia University

OUTREACH OPPORTUNITIES

“To seek out and bring people into a personal relationship with Jesus Christ as Savior and Lord”

Each and every one of us are invited to share the love of Christ. There are many events that happen here where people who enter our church are in need of Jesus. The Lord provides us with opportunities to welcome them into the house of God. To get to know them, listen to their struggles, connect them with the body of Christ, and pray with them.

Do you love kids and parents? Come help us welcome the school kids and families as school gets ready to begin at St. Luke's and Mirror Lake. Even join them for Christmas celebrations.

Do you love holidays? Come meet and greet people who walk through our doors for the Harvest Festival or for Thanksgiving.

Do you love theater? Come to a Godspell show and greet the many guests who are disconnected from Jesus.

Do you love music? Come meet with people at the Chorale, Symphony, and Harmony King events at St. Luke's.

Do you love prayer? Come and invite people to bring their struggles to God at our monthly prayer events.

There are so many more opportunities to be the hands and feet of God in the world! God has led us to open the doors of St. Luke's and to connect us with people who need Christ. As Jesus said, *“The harvest is plentiful, but the laborers are few.”* (Luke 10:2)

On our website calendar, you can click the “Outreach” category, and let me know where you want to be a part of our St. Luke's mission. **Email, call, or grab me at church!**

May the Lord use us to share the love, grace, and direction that people around St. Luke's desperately need.

Chris Davis
Associate Pastor
cdavis@stlukes-church.com



Begin Again

I like football. Really like football.

One of the things I like about football in the fall is that it's a whole new season. How will my Packers do? They're going to the Super Bowl, of course! Possibility graphs, players' achievements, teamwork, and statistics are all available if I choose to look at them. Or, with optimism and team spirit, I'm sure the Packers will go far. **GO PACK!**

Each fall is a time of new beginnings. What was impossible last season is possible in September. What happened last year is done; we're moving forward. Sometimes we become discouraged and disheartened by the past – yesterday, last month, last season, or 5 years ago. We have difficulty releasing the past and starting fresh. Our memories keep us in last year's game, or the pain, bitterness, anger, and issues of many years ago seem to hold us back from finding joy in the present and future.

This fall, let's start a new season. Begin again. Each day is a new day. *“The steadfast love of the Lord never ceases; his mercies never come to an end; they are new every morning; great is your faithfulness.”* (Lamentations 3:22-23) We can't do this on our own. Only because of the forgiveness we have in Christ, we are free to live in Him. Free to serve. Free to love. Free to begin again.

Jan Grothe
Director of Spiritual Growth
jgrothe@stlukes-church.com



MISSIONS

BAG (Bridging a Gap) Weekend Feeding Program



This fall, as part of our ongoing partnership with Mirror Lake Elementary and thanks to a generous grant from the St Luke's Foundation, we will once again be providing backpacks full of food to be sent home over the weekends and school breaks for students in need. The students are selected by the teachers and counselors at Mirror Lake and are students who rely on the Free and Reduced Lunch and Breakfast Programs at school and as a result may not have food to eat during the times when school is not in session. How can you be a part of this ministry? We will need donations of food items to place in the backpacks as well as volunteers to help stuff the backpacks each week. Please check your news and notes and the Welcome Center for more information. The first backpacks will go home in late September or early October. For more information on getting involved in this ministry, please contact Valerie at vdanforth@comcast.net.



Oktoberfest!

Our annual fundraiser for Swaziland is scheduled for October 8, 6:30-9pm at the Breyer property. Come enjoy a hearty German themed dinner, locally brewed beer and participate in the always entertaining Dessert Auction! A Raffle and "Fund the Team" auction will also take place. Tickets will be \$25 each and available at the Welcome Center starting September 25. Limited space available. Cash, check, debit and credit accepted. Contact Kendra Breyer (kbreyer716@hotmail.com) with questions or if you would like to make a dessert for the auction.

Reach Out Volunteer Opportunities

There are two shelters that operate during the winter months to help provide shelter, food and support services to homeless men and women in Federal Way. St Luke's has offered to provide meals for two weeks. The first week will be October 3-9. We need volunteers willing to make dinners that week for the men's shelter. The second week will be November 28-December 4 for the Women's Shelter. If you, your family, your friends or your Bible Study group are willing to help, please contact Mary Ann Hopewell at mabach@aol.com.

Mark Your Calendar for Global Weekend 2016!

St Luke's annual Global Weekend will take place the weekend of November 5-6. Representatives from the agencies we support through our Ten for the World giving will be in the lobby area before and after services that weekend to share more with you about their organizations. We will also be assembling Caregiver Kits that will support our partnership with Swaziland.

Thanksgiving

We will be collecting socks, hats and gloves at the Thanksliving Service on Wednesday, November 23, at 7pm. Collected socks, gloves and hats will support Reach Out, one of our Ten for the World groups. We will also be collecting new and used Bibles, which will be donated to a ministry which provides Bibles for people who are incarcerated. Please contact Mary Ann Hopewell at mabach@aol.com.



GivingTree

The Giving Trees will be up the weekend of November 12-13. The gifts benefit families in need through our partnership with Mirror Lake Elementary and residents of Life Care Center in Federal Way. More details will be available as we get closer to November. If you have questions, please contact Noel at njohnson@stlukes-church.com.

ST LUKE'S THEATRE COMPANY PRODUCTION



The Fall Show at St. Luke's this year is **Godspell!** This show is based on the **Gospel of Matthew** and has great songs and will be superb entertainment for the whole family. The shows will be the last weekend in October and the first weekend in November. This is an excellent opportunity to invite friends, family, co-workers, and neighbors to a fun, entertaining event.

Show Dates:

Friday, October 28, 7:30pm

Saturday, October 29, 7:30 pm

Sunday, October 30, 2pm

Friday, November 4, 7:30pm

Saturday, November 5, 1pm & 7:30pm

Sunday, November 6, 2pm

HELP FILL A BAG



BRIDGING A GAP
Weekend Feeding Program

Ways You Can Get Involved:

1. Donate food items from the list
2. Donate funds to purchase food items & supplies for this ministry
3. Sign up to volunteer
(Stuff backpacks; help with inventory; deliver backpacks to Mirror Lake; shop for supplies, etc.)

Please contact Valerie Danforth at vdanforth@comcast.net for more information.

WISH LIST:

Food items that are child friendly, pull top lids, no preparation, such as...

- | | |
|---|--|
| <input type="checkbox"/> granola bars | <input type="checkbox"/> 16 oz jars of jelly |
| <input type="checkbox"/> cup of soup | <input type="checkbox"/> peanut butter/cheese crackers |
| <input type="checkbox"/> individual carrot packs, apples, oranges | <input type="checkbox"/> 100% juice boxes or Capri Suns |
| <input type="checkbox"/> fruit/pudding cups | <input type="checkbox"/> canned pasta, soups, chili, etc. (with pull top lids) |
| <input type="checkbox"/> peanut butter - 16 oz jars | <input type="checkbox"/> oatmeal envelopes |
| <input type="checkbox"/> fruit snacks | <input type="checkbox"/> pop tarts |
| <input type="checkbox"/> individual mac & cheese, microwaveable | <input type="checkbox"/> 16 oz water bottles |
| <input type="checkbox"/> tuna in pouches or with pull top lids | <input type="checkbox"/> quart size ziplock baggies |
| <input type="checkbox"/> raisin packs | <input type="checkbox"/> milk, in shelf stable cartons |

ON FIRE!

Sunday School Opening Day

Sunday, September 11 - 9:30am

Celebrate a new phase of life for your 3 year old – Sunday School! At the beginning of the 9:30 service, there will be a special sending/prayer time for 3's and their parents allowing us to celebrate this milestone as a community – our church family.

Presentation of Toddler Bibles

Sunday, September 18 - 11am

We have a special toddler Bible just for 2's! Presentation and story time for 2's and their parents will be at the 11:00 service on September 18.

Brunch & Presentation of 2nd Grade Bibles

Sunday, September 18 - 11am

2nd grade students and their parents are invited to a special brunch beginning at 9:30AM where they will spend time exploring the Bible. Following the brunch at the 11AM service 2nd graders will be presented with their own Bible.

Meet the Babies

Sunday, October 9 - 10:30-11am

Who are the parents of babies at St. Luke's? This is a time to meet other parents and talk about the life change of having a baby in the house, sharing experiences, joys, frustrations, and help for others.

Backstage Worship Tour

Saturday, October 15 - 3-4:30pm

A special event for kindergarten kids and their parents to see what happens behind the scenes in worship. Tour backstage with Pastor Chris. Interact with the band. Learn the whys behind

what we do each week. The following day, Sunday, October 16, the kids will sing a special song with the band at the 11:00 service.

Helping Hands – Thanksgiving Baskets

Saturday, November 12 - 10-11am

Fours like to help! This event is created for those young ones who are so eager to be helpful. They will participate in helping to put together Thanksgiving baskets and make Thanksgiving cards for Mirror Lake School families.

Kids For Christ KFC456

Kids for Christ for 4th, 5th and 6th graders begins on Wednesday, September 21 at 6:30pm in Malkow Hall. We will begin with a meal together with parents followed by a parent meeting and fun activities in the gym for 4th-6th graders. This group meets every month on the third Wednesday of the month. A KFC calendar of events will be available at the September 21 meeting and will be posted on-line. You are always welcome to invite friends to KFC!

Children's Choir

Children's Choir for 1st-6th graders will begin on Thursday, September 15, at 6pm, in room #101. Everyone who wants to sing and make a commitment to the choir is welcome. There are no auditions. The choir meets weekly from 6-7pm. They sing monthly at 11am worship and for other occasions such as 3pm Christmas Eve family worship, Sunday School Christmas Program and Palm Sunday. They present a Christian musical at the end of our choir year. Contact Mitzie with questions: mollila@stlukes-church.com.

SUNDAY SCHOOL

SUNDAY SCHOOL SPARK AND FLAME

Our Sunday School classes for 3, 4 and 5 year olds (Spark) and grades 1 through 6 (Flame) will begin on Kick-off Sunday, September 11, at 9:30am. Watch for a reminder postcard in the mail with classroom locations. Please register your children at the Welcome Center for Sunday School. You should have received your red envelopes already in the mail with information for each of your children. Please call us with any questions at 253.941.3000.

VOLUNTEERS NEEDED FOR CHILDREN'S MINISTRY

We are in need of Children's Ministry volunteers to serve as co-teachers, substitutes, helpers for special events, drama team members for Super Sunday, rotational teachers, family event help and other possibilities. Please fill out a Sunday School volunteer form, available at the Welcome Center, to let us know how you can help. We cannot do Spark and Flame Sunday School without you!

SPARK AND FLAME EVENTS

SEPTEMBER

11	9:30am	3-year-olds send-off	Worship Center
18	11:00am	Toddler Bibles given out	Worship Center
18	9:30am	2 nd grade Family Brunch	Malkow Hall
	11:00am	Bible given out to 2 nd graders	Worship Center

OCTOBER

11	11:30am	Meet the Babies - parents of babies	Learning Center
17	3:00pm	Kindergarten Backstage Worship Tour	
18	11:00am	Kindergarteners sing	Worship Center
23	9:30am	5th & 6th grade brunch	Malkow Hall

NOVEMBER

8	5:00pm	4 th grade Family Mystery Dinner	Great Room A
21	10:00am	4-year-olds make Thanksgiving Baskets	Great Room

DECEMBER

12	11:00am	Christmas Program rehearsal, gr 1-6	Worship Center
13	11:00am	Christmas Program Children ages 3-5, grades 1-6	Worship Center

FAMILY HOLIDAY EVENTS



October 31
6-8pm
Malkow Hall



November 27
2-4:00pm
Malkow Hall

ST. LUKE'S LUTHERAN CHURCH VBS FACT SHEET

July 11 – 15, 2016 - "Cave Quest" by Group Publishing

VBS Director: Noel Johnson
Preschool Director: Ruth Hileman

Elementary					Preschool					Total				
Attendance					Attendance					Attendance				
Day 1	Day 2	Day 3	Day 4	Day 5	Day 1	Day 2	Day 3	Day 4	Day 5	Day 1	Day 2	Day 3	Day 4	Day 5
124	134	129	116	106	74	74	75	72	56	198	208	204	188	162
Enrollment*					Enrollment*					Enrollment*				
Day 1	Day 2	Day 3	Day 4	Day 5	Day 1	Day 2	Day 3	Day 4	Day 5	Day 1	Day 2	Day 3	Day 4	Day 5
124	140	144	146	146	74	78	80	80	80	198	218	224	226	226

*A child is considered enrolled on the first day they attend VBS

** Total Registrations received: 245

Elementary

Crew Leaders

Cole Ashbaugh, Hannah Blackmon, Jessica Chase, Justin Chase, Kyra Craig, Joseph Cummings, Lindsay Cummings, Jacqueline Detzler, Nicole Gillis, Sarah Hartman, Hannah Hileman, Corban Jonson, Angie Kamrath, Eric Kinzner, Barbara Lester, Jennifer Marguez, Regan Meyer, Becky Nelson, Peyton Newman, Dominic Ortiz, Tessa Pariseau, Emma Ray, Colette Sweers, Dillon Weber, Kelsie Zern

Station Leaders

Opening/Closing: Kristin Emmert

Cave Quest Pals: Kate Ashbaugh; Reagan Neumann

Bible Adventure: Jacob Ward
Assistant: Darcy Carlisle

Imagination Station: Amy Carlisle
Assistant: Caitlyn Jonson, Ashley Kruse, Donna Lukinov

Games: Roger Hale; Colin Caley, Bella Moore
Assistant: Ashley Lowy, Isabelle Stephan

KidVid Cinema: Kathryn Frostad

Snack Team: Cathy Nolan, Lois Thompson; Paula Norwood; Hannah Soltis, Terrie Brenden

Registration: Marla Beckstrom, Sylvia Courtney Gloria Flint, Julie Klouse, Trellice Kreshel, Linda Salyer, Susan Taylor

Audio/Visual: Michael Petzoldt, Brandon Kennicott

Float: Angie Nelson, Jennifer Becker-Covert, Carrie Wolbaum

Preschool

Lead Teachers: Donna Metz, Debbie Mininger, Tracy Keene, Robin Grover

Assistant Teachers: Carmen Brown, Linda Craft, Isaac Howland, Ashley Lowy, Danielle Maddox, Leah Mathew, Emily McIntyre, Erin Meyer, Gabriel Moore, Benjamin Philipose, Eva Ruppel, Revekah Varghese, Linda Herold

Facts and Acknowledgments

Total kids enrolled in Cave Quest VBS	226	Kids from St. Luke's Preschool	26
Kids with perfect attendance all week	134	Kids from St. Luke's Child Care	27
Kids with perfect attendance after enrollment	8	Kids from other churches	65
Kids from St. Luke's Lutheran Church	76	Kids with no listed home church	56

L-TEAMS

What is an L-Team?

People engaging in a **Live.Love.Learn.** activity where relationships are built and Christ is shared.

L-Teams are not small groups

They may or may not meet weekly

They may or may not open a Bible or pray or talk about Jesus

L-Teams can include anyone, meet anywhere and do almost anything

They are not just for St. Luke's people - invite co-workers, neighbors and friends

They can meet at your house, at church or at the bowling alley

L-Team samples:

Sip 'n Score, Reckless Faith Study, Christian Motorcyclists, BRIDGE Parenting, and Holiday Decoration.

We have Mirror Lake School community service teams, boy scouts, small group teams, hospital visitors, potlucks, and bowling.

For more information, contact Jan Grothe: 253.941.3000 or jgrothe@stlukes-church.com



Membership Class

Membership Class

The membership workshop and Next Steps events are designed to learn about the vision and purpose of St. Luke's, as well as our method of ministry (L-Teams). We cover topics in the Christian faith, including Baptism and the Lord's Supper. The next workshop is: **Friday, September 16 and Saturday, September 17**. One-on-one time is Sunday, September 25, at 9:30. We receive new members into membership on **October 2** at 11:00am with a brunch at 9:30am.

Adult Ministry

Sunday School for Adults Fall 2016

"The 10 Commandments"

A fresh look at the commandments God gave His people thousands of years ago. Are they important anymore? Why even talk about them? Howard Britt will walk through the commandments and talk about Law and Gospel, sin and grace. Sundays, Sept 11-Nov 20, 9:30am.

Worship Expressions

We have a variety of worship services at St. Luke's. What are the common factors in all of them? What does it mean to "worship?" These 4 weeks will take a look at Scripture and what worship is in our lives, not just on a weekend for one hour. Facilitated by Robert Grothe. Sundays, Nov 20-Dec 11, 9:30am

Apologetics: Defense of the Gospel

How do you deal with doubts and attacks? How do you help see Jesus and not "Christianity" as it is portrayed in the world. Apologetics (the study of defending faith) helps address these issues. Facilitated by Pastor Chris Davis. Oct 16, 23, and 30.

Real World Kids, Real World Parents

It can be overwhelming to know how to lead our children toward good choices and a faith that lasts through the toughest challenges in our culture. This three-week class helps parents seek Godly responses to the complex parenting challenges. We will tackle real questions with honest, Biblical answers. Facilitated by Noel Johnson. Sept 25, Oct and Oct 9, at 9:30am.

WOMEN'S EVENTS

Sue Thode will be back to start our fall Women's Ministry events. We are thrilled to have her speak! Each month, speakers will challenge and inform us on a variety of topics, as we grow in relationship with each other and with the Lord. Watch for the brochure that will be at the Welcome Center this fall. Join us for breakfast and Sue's presentation:

Desert Wear

October 1, 9-11am, Great Room A

Presenter: Sue Thode

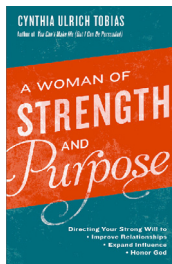
When you plan a trip to the desert you can prepare with the right clothing, sunscreen, cool sunglasses, and gadgets. That way, a desert experience is survivable and may even be pleasant.

Unfortunately, in my experience, no one plans for a spiritual desert experience. Suddenly, there you are in that place where there are no fountains of joy or rivers of life. There are no still waters and no green pastures in the spiritual desert. When I find myself in the desert, my mind knows that God is good and Psalm 23 is true, but my feelings say otherwise and feelings become my reality. I feel barren and discouraged, fearful and anxious, fatigue and failure.

So what can I do when I am stuck in a desert place? Make friends with vultures? Decorate the cactus? Invent a sand facial? Add an "s" and have dessert?

I have found God provides desert wear when I am in a wasteland, and He will do the same for you. Please join us on October 1, 2016, from 9:00 to 11:00 as we explore what God provides in the desert.

Women: Cynthia Tobias is coming!



Cynthia Tobias, a nationally-known author and speaker, will be our presenter in February 2017! Her topic: "Women of Strength and Purpose." Discover how to use your strong will to make a difference! Honoring the vitality of confident Christian women, Cynthia challenges you to employ your God-given strengths to enhance your personal relationships, find your purpose, lead with integrity, and more!

February 4, 2017, 9-11am

Women's Ministry Calendar of Events

October 1 Desert Wear – Sue Thode speaker

November 5 Something Old; Something New

Create a new Christmas decoration out of old frames and ornaments in time for this year's celebration. Stephanie Hagen will show us how! Bring a few ornaments, pinecones, snowflakes, or such to use. We'll supply the ribbon and frames.

December 3 – Christmas Traditions

Back by popular demand! We will visit our personal, family Christmas traditions in ornaments, decorations, stories, and food. Bring something to share this day! Listen to how Christ's birth is celebrated in many ways throughout cultures and generations.



MEN'S EVENTS



Men's Breakfast*

**2nd Saturday of the Month, 7:30am
Great Room A&B**

Join us each month for an enriching time connecting with other guys over a delicious breakfast, and participating in an engaging discussion on how God is moving in our lives. Questions: contact Bob Snyder (robertsnyder@chifranciscan.org) or Todd Zern (tzern@stlukes-church.com).

* The 2016-2017 has not been finalized when this article was written. Get connected with the men's ministry group online, and we will keep you up-to-date.

JOIN US ONLINE – Have you logged into your member account yet with our new website (www.stlukes-church.com)? Click on the **RED LOGIN** button, create your profile (it's really easy...), search for the men's ministry group, and request to join. From there we will be able to keep up to date with schedules, events, and general announcements.

Summer Movie



Join us on the back property of St. Luke's for this family friendly event. Bring your favorite snacks, camping chairs and blankets, and enjoy a movie under the stars. In case of rain, the movie will be played inside the Great Room.

Friday, September 9 – 7:30pm
Tomorrowland

New! Gifts Fair

Pastor Reinke will be speaking on spiritual gifts in September as part of our preparation for a new senior pastor. God gave each of us spiritual gifts to serve Him as we serve others to grow His Kingdom. (Eph 4:15-16) After all services on September 25, we will have we will have opportunities check out what we have learned in the service and see where we can serve the Lord using our gifts at St. Luke's and in the community – a Gifts Fair! More information will be coming soon. If you would like to help with the Fair, contact Jan: jgrothe@stlukes-church.com or 253-941-3000.

ST LUKES' FOUNDATION



As the St. Luke's Foundation moves into its second year we are proud to be able to bring these two very interesting seminars to the St. Luke's community. These seminars support one of the Foundation's primary goals to help educate and equip members and friends with the knowledge and direction to both help them with their finances, as well as learn about the many options available when planning one's estate.

The St. Luke's Foundation is a 501(c)3 non-profit that is organized exclusively for charitable, educational and religious purposes that are aligned with our mission as a church to "seek out and bring people into a personal relationship with Jesus Christ as their Savior and Lord." The Foundation was created to better enable us to reach out to the next generation through meaningful long-term investing and providing an option for members to leave a lasting legacy through their giving and estate planning.

The Foundation Board is a group of elected members of St. Luke's Lutheran Church that volunteers their time and energy to help achieve the primary purposes of the Foundation which are to create new opportunities to develop caring ministry initiatives, create new opportunities for families, create new opportunities to engage with the local and global community, and to help implement physical improvements and projects for the church itself.

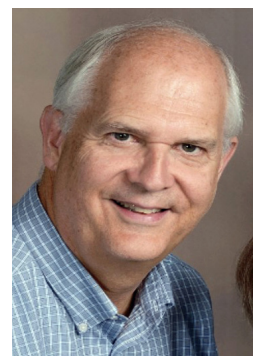
Through grants provided annually, the Foundation has been instrumental in funding the BAG program (Bridging a Gap), which provides backpacks of food to

those children and families at Mirror Lake Elementary School whom may not have the nourishment they need outside of school hours. Entering its 3rd year, the success of this program has caused a desire to expand and develop partnerships with other churches in Federal Way to mentor them to sponsor schools within their respective neighborhoods. The Foundation has also been instrumental in supporting the new Young Adult ministry program funding the hiring of a part-time intern for 1 year. The Foundation looks forward to supporting new and exciting ministries in the years to come.

And finally, if you are interested in discussing possible options to "tithe through your estate plan" to either the Foundation or the church itself, or to provide a donation to the St. Luke's Foundation, please contact me or any of the St. Luke's Foundation members.

In His Service,

Ky Hopewell
Board President
St Luke's Foundation
206-612-5016
hchmab@comcast.net



ST LUKES' FOUNDATION EDUCATIONAL EVENTS

SOCIAL SECURITY 101: Everything You Want to Know

- Retirement benefits and eligibility requirements, and what early retirement does to your benefits
- How to qualify for disability, survivor, and spouse benefits
- How to use your my Social Security Online account and other online services
- Future of Social Security, and understand how to get the most from your benefit

When: Sunday, October 9, 12pm

Speaker: Kirk Larson (Social Security Administration, Western Washington Public Affairs Specialist)

Location: St Luke's Lutheran Church (Great Room B)

Introduction to Medicare

- What are the different parts of Medicare?
- What are my Medicare coverage "choices"?
- What is the difference between Original Medicare and Medicare Advantage Plans?
- Where can I get personalized help about choosing coverage?

When: Sunday, November 6, 12pm

Speaker: Carolyn Smith (Washington State Office of the Insurance Commissioner, SHIBA Field Supervisor)

Location: St Luke's Lutheran Church (Great Room B)



We have launched the new website. When you logon to **www.stlukes-church.com**, you will have full access to the new site. Members will have access to your own information on the database. Once you login, you now have access to view: your own personal contact information, access your financial giving history, set up information to donate to the church online, add your name to and view the church online directory, access groups at St Luke's and register for events.

When you first login to the member portal, **click on the red LOGIN button** at the top, right-hand side, **then click on (New members, Register here.)** As you fill out the registration form, your personal profile information should be immediately available, provided you use the same email address that is connected to your personal information on the church database.

Contact Todd Zern: tzern@stlukes-church.com or 253.941.3000

MEMBERSHIP UPDATES

Membership Happenings at St. Luke's

May 2, 2016-July 31, 2016

Please update the church office at 253.941.3000 or tcaley@stlukes-church.com with new addresses, phone numbers or e-mail addresses.

Baptized:

6/19/2016 Lillian Stork

6/19/2016 Lily Britt

6/25/2016 Jasira Wilson

6/25/2016 Shamaree Wilson Jr.

7/30/2016 Logan Maverick Stonehocker

Deaths:

5/21/2016 Ed Friedemann

6/27/2016 Frank Hopewell

Confirmation 06/05/2016:

Jacob Baker

Hannah Blackmon

Matthew Brandmire

Jessica Chase

Joeseeph Cummings

Lindsay Cummings

Jared Engman

Mackenzie Grieger

Emily Hunt

Stephen Keables

Kayna Kliewer

Isabella Moore

John Schueller

Hannah Togia

Alexandria Zanger

Weddings:

6/27/2016 Rupert Wheeler and Matilde Ruiz Coronado

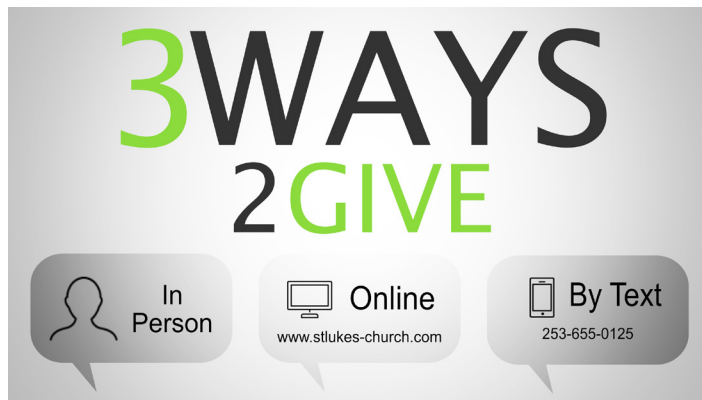
Releases:

Jessica Brown

FINANCIAL UPDATE

Giving: 4th Quarter (July 2015-May 2016)

General Fund Giving Update (Year-to-Date July 2015 - May 2016)	
Actual	\$ 1,136,250
Projection (Budget)	\$ 1,138,405
% Actual vs. Projection	-0.002 %
May 2016 vs. May 2015	-1.27 %



2016 Mission Plan Performance

*June financial statements have not been finalized at the time this article was written.

Income-Expenses Snapshot (Year-to-Date July 2015 - May 2016)	
Total Income (Church, School, and Childcare)	\$ 1,850,331
Total Expenses (Church, School, and Childcare)	\$1,858,933
Net Income	\$ (8,603)
Budget Surplus / (Deficit) (after mortgage principal payments)	\$ (105,091)

Income (Church, School, Childcare)

General Fund offerings for May 2016 (2nd month of 4th quarter) of \$1,136,250 ended YTD under budget by \$2,155 (-0.002%). Compared to this time last year, FY16 giving has decreased by 1.27% (May 2015 YTD = \$1,156,310). Total YTD income (including interest income, facility outreach/rentals, schools, childcare and building fund) of \$1,850,331 falls below budget by 3%,

primarily due to decreased general fund and building fund donations. Childcare/school tuition is below budget, while bottom-line net proceeds are behind budget at a lesser rate.

Expenses

Total personnel expenses through May 2016 are under budget by 1% (-\$14,970) primarily with the school and childcare ministries monitoring staff expenses and adjusting accordingly. In addition, operating expenses YTD of \$25,326 are over budget mainly due to 3 areas - church interest payments due to cancelling the capital campaign where the loans were not refinanced as originally planned; theatre company ticket sales falling below projections; and facility maintenance demands moving expenses to go over budget. After mortgage principal payments, the budget deficit of \$105,091 finishes behind FY16 YTD budget expectations by \$112,533. The budget shortfall is absorbed by cash reserves, and this will continue to be monitored as we the end of the fiscal year with June's financial statements.

General Fund Cash

General Fund cash reserves at the end of this reporting period is \$612,658 (May 2015 = \$781,625; -\$168,967 / 21.6% decrease versus this time last year). The draw in reserves has addressed the FY 2015 deficit of \$70,000, the above noted budget deficit, and initiating the capital campaign consulting and land permit development initiatives.



Todd Zern
Director of Operations
tzern@stlukes-church.com



Back to School Shopping with Amazon

Getting ready for the new school year? Do you have your Amazon account linked to St Luke's? Go to smile.amazon.com, search "St Luke's Lutheran Church (Federal Way, WA), and sign up. Every purchase you make, 0.5% will be donated to St Luke's.

SNAP SHOTS



Rock N Roll

Fifty-six St. Luke's members ran or walked the Seattle Rock N Roll Marathon or Half Marathon with Team World Vision to give families access to clean water. Our St. Luke's team raised \$39,685.25. Thank you to everyone who supported and prayed for them during their journey!



Gleaners' Mission Trip

Our mission team along with 2 other churches helped process enough vegetables for over 100,000 servings of soup. In their spare time they played **Nine Square in the Air** and studied about "active" and "passive" righteousness. Thank you for your support!



New Playground Construction

After years of fundraising by our school and childcare, coupled with a generous donation from a member, our new playground is now a reality. Thank you to the volunteers who worked on the installation.



Creation Festival

Our group of 32 traveled to Kennewick to enjoy fellowship, card playing, camping, bands, speakers but most of all to worship Jesus, their Lord and Savior.



Multi-Service Center Summer Feeding Program

Thank you to all who volunteered their time this summer to help pack lunches for hungry kids in our community. Over 18,000 meals will be served this summer!



Summer Drama Camp

Our summer drama camp was attended by 38 kids...ages 7 to 17. At the end of two weeks the kids performed an hilarious and fun adaption of "Snow White."

Send your snapshot of a St. Luke's happening to Donna: dbreyer@stlukes-church.com.

St. Luke's Lutheran Church
515 South 312th Street
Federal Way, WA 98003

RETURN SERVICE REQUESTED

Non-Profit
Organization
U.S. Postage
PAID
Federal Way, WA 98003
Permit No. 190



general info

worship services

saturday - 5:00 pm
sunday - 8:00, 9:30 and 11:00 am

sunday school

available sunday mornings

childcare

available weekdays - 6 am - 6 pm

preschool and kindergarten

available during the school year

contact

515 s 312th street
federal way, wa 98003
253.941.3000
www.stlukes-church.com

childcare
253.941.3630

preschool - kindergarten
253.839.0173
www.stlukes-preschool.com

pastoral staff leadership staff

david reinke

interim lead pastor

jake allstaedt

associate pastor

chris davis

associate pastor

rod riveness

visitation pastor

heidi francis

director of communications

jan grothe

director of spiritual growth

stephanie hagen

director of school/childcare

noel johnson

director of children's ministries

todd zern

director of operations

support staff

tammy caley

assistant to the lead pastor

donna breyer

assistant to the associate pastor

heather halbakken

preschool registrar

teri johnson

bookkeeper

rob percival

facility and maintenance assistant